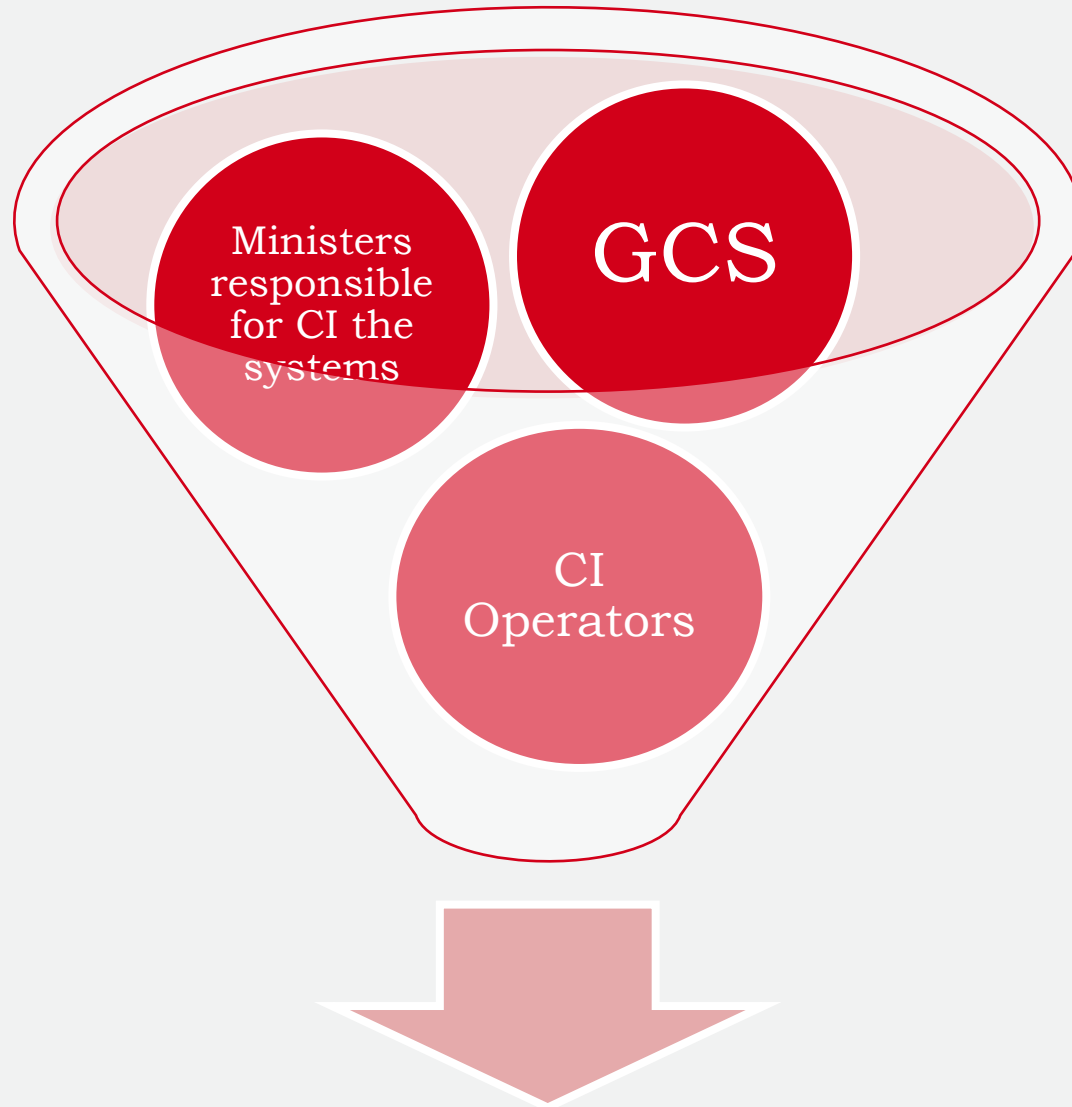


Critical Infrastructure Protection Plan

R
C
B

Rządowe Centrum
Bezpieczeństwa



protection
of critical infrastructure
is an **operator's**
duty

Obligations put on CI operators

- preparation of critical infrastructure **protection plans**
- **designation of a contact person** responsible for maintaining relations with public administration

Legal basis for imposing obligations on CI operators in Poland

1. Act of 26th April 2007 on Crisis Management
2. Regulation of the Council of Ministers of 30 April 2010 on Critical Infrastructure Protection Plans

Operator should prepare critical
infrastructure protection plan
within **9 months** from receive
information that facility is on CI list

1) Generic data, as:

- a) Name and localisation of CI, National Business Registration Number, commercial register of the National Court Register, responsible person;
- b) Characterisation of CI object and main technical parameters,
- c) Map with objects, installations or systems plotted on it,
- d) Functional interconnections with other buildings, systems, services.

2) Risk analysis for CI object including:

- a) Threats identification (all hazards approach)
- b) Effect (impact) for every thread
- c) Likelihood - probability of appearance (ex. from historical data)
- d) Level of risk (risk = effect * probability)
- e) Level of risk acceptance
- f) Scenario for every high risk

Likelihood	Impact				
	Insignificant	Minor	Moderate	Major	Severe
Almost certain	Moderate	High	High	Extreme	Extreme
Likely	Moderate	Moderate	High	High	Extreme
Possible	Low	Moderate	Moderate	High	Extreme
Unlikely	Low	Moderate	Moderate	Moderate	High
Rare	Low	Low	Moderate	Moderate	High

Cooperation with:

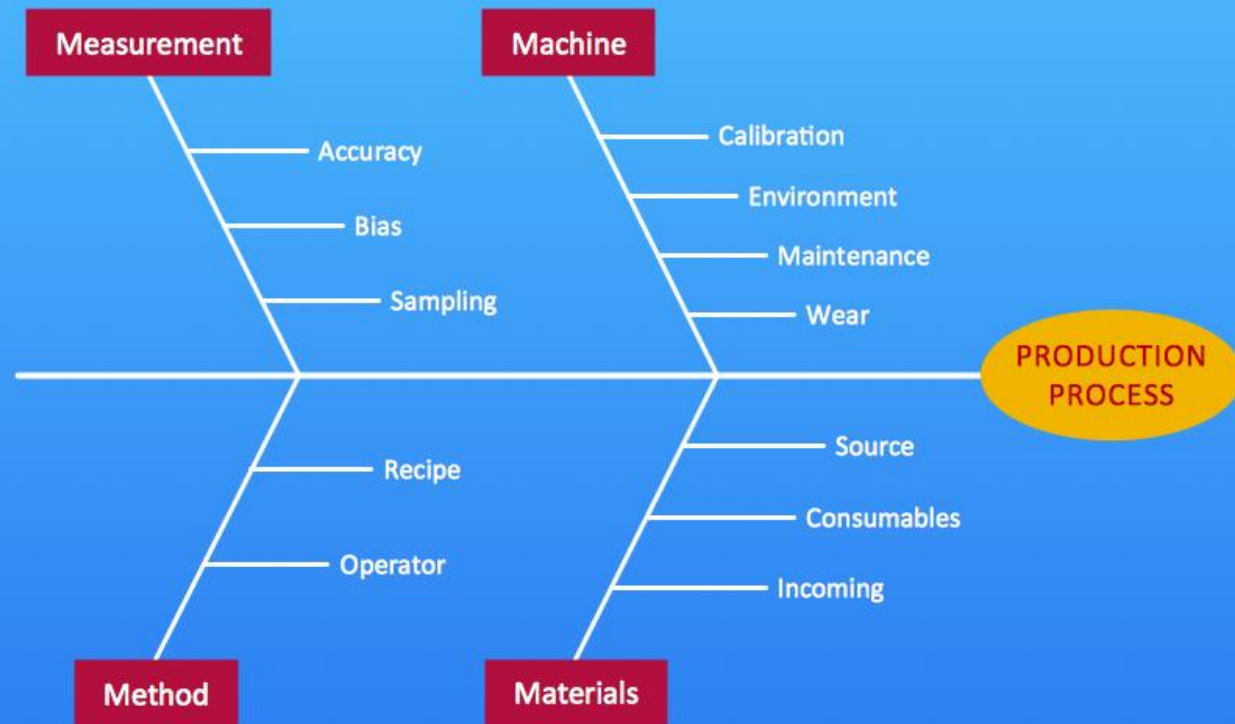
- 1) Authorities on all levels
(governmental, local)
- 2) Internal Security Agency – terrorist
threat



- flood
- epidemics
- chemical contamination
- disruption in the supply of electricity
- disruption in the supply of liquid fuels
- gas supply disruption
- severe frosts / heavy snowfall
- hurricanes
- forest fires
- epizootic
- building disasters
- landslides
- drought
- radiation contamination
- social protests
- terrorist threats

Additional threats identification – specific for operator

Production Process



Which threats could harm critical assets?

Critical Infrastructure Protection Plan should have full description of protection in 6 areas:



- Physical
- Technical
- Personnel
- IT
- Legal
- Recovery Plans

3) characteristic of:

- a) Functional independences between CI object and other CI systems,
- b) Own resources possible to be used for protection of CI object,
- c) Local authorities and services resources and force possible to be used for protection of CI object,

4) Variant of the action:

- a) In an emergency,
- b) For ensuring the continuity management,
- c) Reconstruction of part or whole CI object;

5) rules of cooperation with:

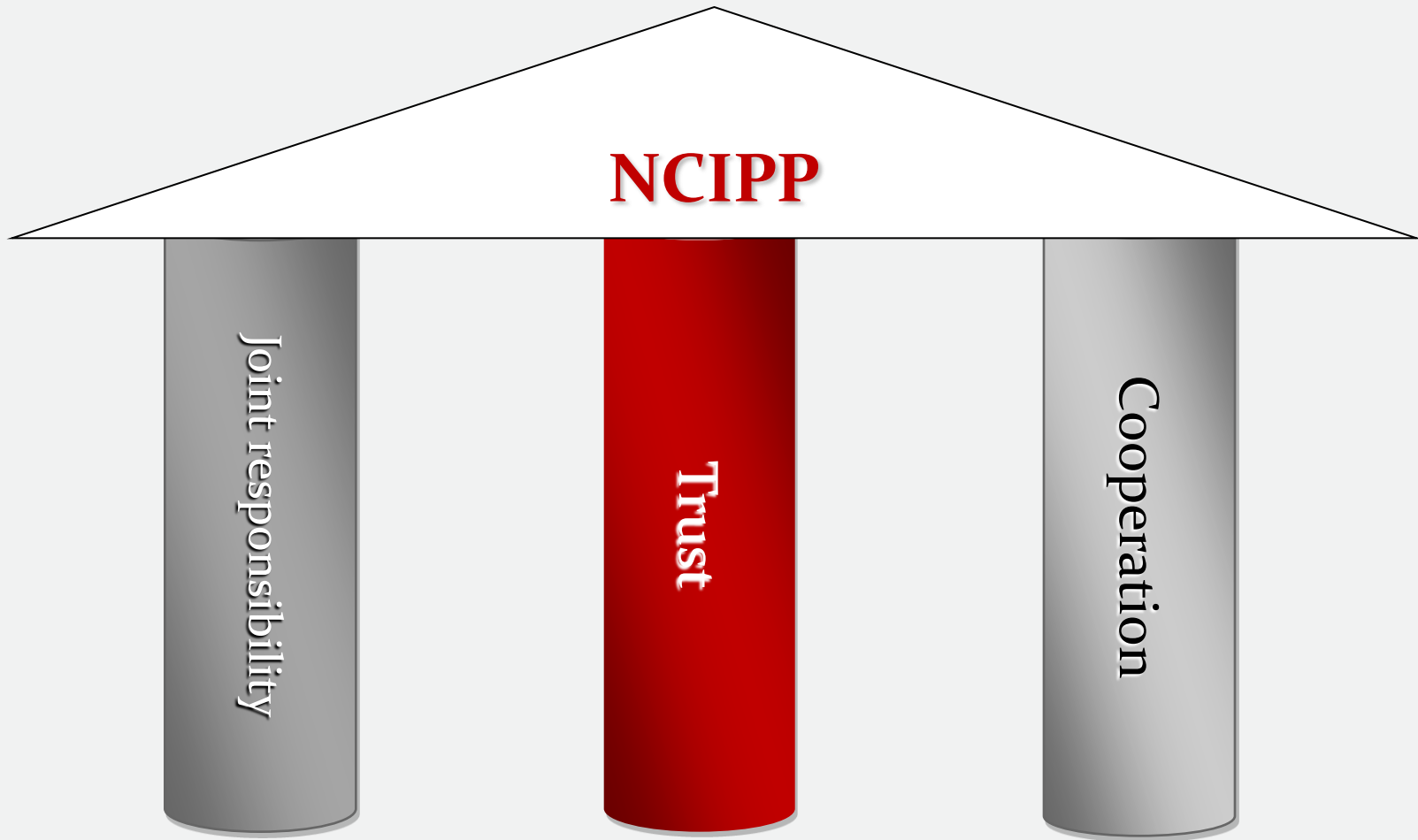
- a) local crisis management units
- b) national administration

Critical Infrastructure Protection Plan should be agree with:

- 1) in 14 days period in appropriate part with territorial :
 - a) Police
 - b) Fire Service
 - c) Water Management Board
 - d) Inspector of Building Control
 - e) Veterinarian Inspector
 - f) Sanitary Inspector
 - g) Director of Maritime Office
- 2) in 45 days period with ministry responsible for adequate CI system.

- Chief of Government Centre for Security have 90 days for analyse Critical Infrastructure Protection Plan and approve if it is correct.
- If Plan haven't necessarily information or CI protection level is not sufficient, Plan is returned to the operator for improvement in fixed time period.

**Critical Infrastructure
Protection Plan must be
updated at least in every 2
years!**



Critical Infrastructure
Protection Plan contains
SENSITIVE information
which **MUST BE**
PROTECTED

Thank you for your attention

Contact:

Krzysztof Brzozowski

Critical Infrastructure Protection Unit
Government Centre for Security

krzysztof.brzozowski@rcb.gov.pl

Credits:

<http://www.publicdomainpictures.net>

<http://www.FreeDigitalPhotos.net>